

# Alii Cove

AT HONULULU BEACH

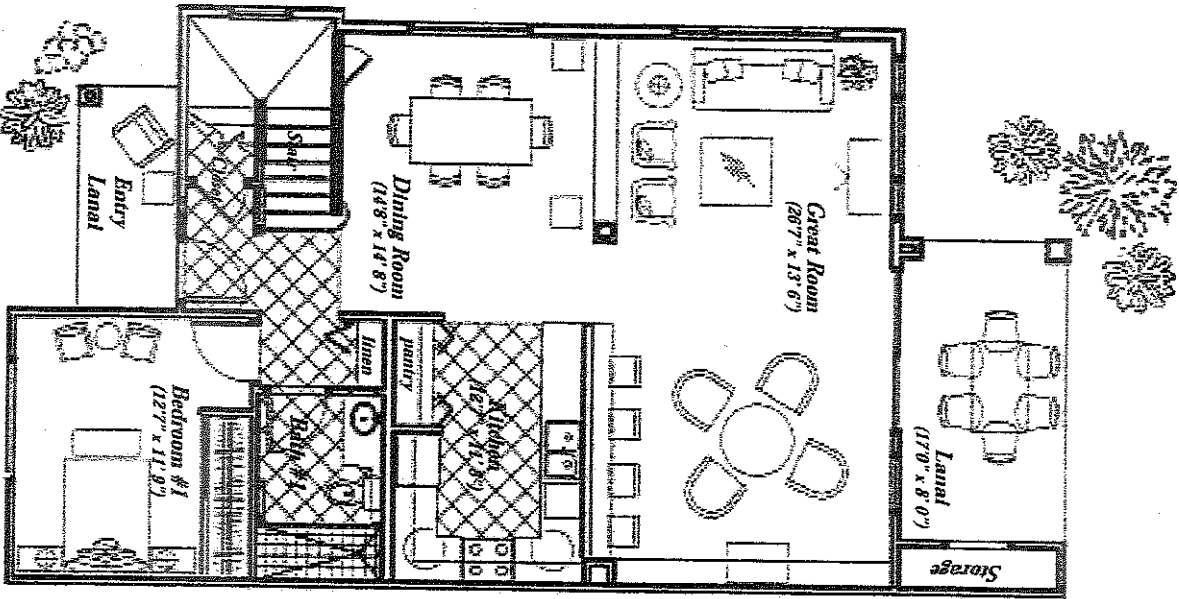
*Storm*

Plan Four - "The Sea Turtle"  
 3 Bedroom • 3 Bath  
 (Plus Den/Study Option)

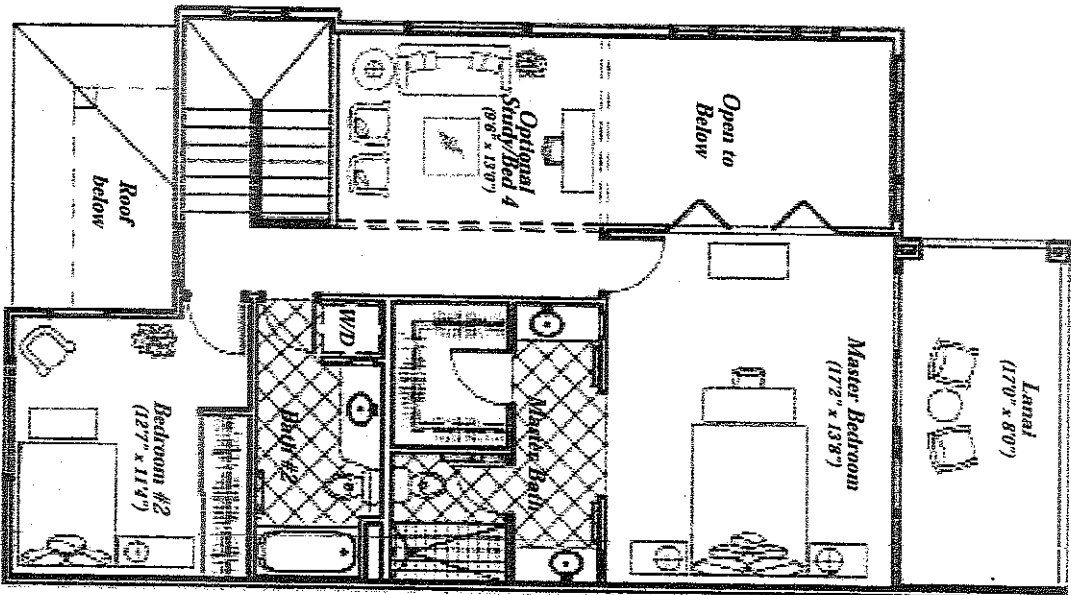
Living 1,699 sq. ft.  
 Lanai/Storage 321 sq. ft.  
 Optional Study/Bedroom 116 sq. ft.

Total 2,136 sq. ft.

FIRST FLOOR



SECOND FLOOR



Square footages noted are intended to be as accurate as possible. Actual dimensions may vary slightly due to construction conditions.